



Resource Center

Historical Perspectives

Port Washington



Historical Society



1860 Lighthouse

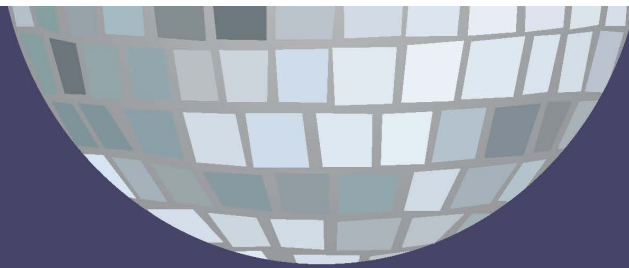
VOLUME 34, ISSUE 1

SPRING 2023

“THURSDAY NIGHT FEVER” GALA

Save the Date Thursday, July 20

The 2023 Gala Committee has been busy over the winter getting all the fun in place for our annual fundraiser. This year we’ll be partying under the disco ball to *Thursday Night Fever* at *Flannery’s* at Fire Ridge Golf Course. A big thank you to all who have already donated. If you have any silent or live auction items you’d like to donate, we’ll be accepting them through May. If you’d like to become a sponsor, please give us a call, and we’ll be happy to talk with you. This year many sponsorship levels include tickets to the Gala. Tickets are \$50 each and you may purchase them now on our website pwhistory.org. Invitations will be mailed out June 1. We look forward to you digging out your bellbottoms and joining us. Night fever, night fever ... 🎵



“BOOGIE DOWN!”

PORT WASHINGTON HISTORICAL SOCIETY

2023 GALA

THURSDAY, JULY 23, 2023 5-8PM

FLANNERY’S AT FIRE RIDGE GOLF CLUB,

2242 HWY W-GRAFTON

5 PM -7 PM

Bid on Silent Auction Items

Hors D’oeuvres/Complimentary Wine/Beer/Cocktail

7-8 PM

Live Auction and Paddle Raise

Inside this issue:

<u>President’s Message</u>	2
<u>Executive Director’s Update</u>	3
<u>Resource Center News</u>	3
<u>1860 Light Station Report</u>	4
<u>Family Fun at the Light Station</u>	5
<u>It’s Complete!</u>	5
<u>Magical History Tours</u>	6
<u>Shipwreck Walking Tour</u>	6
<u>New Members and Renewals</u>	7
<u>Port’s First Gas Stations—Now Disappeared</u>	8
<u>PWHS Again Hosts a Saturday Beer Garden</u>	9
<u>Donations and Memorials</u>	10
<u>PWHS Tuesday Night Speaker Series</u>	10
<u>Membership Application</u>	11

Board of Directors

Nancy Holley, President
 Pat Curtiss, Vice President
 George Bichler, Treasurer
 Barbara Joosse, Secretary
 Tom J. Carson
 Andrea Cole
 Majka Drewitz
 Kevin Grady
 Howard Hinterthuer
 Keith Janus
 Donald McCown
 Mark Schowalter

PWHS Exec. Director

Dawn St. George, PhD

Resource Center

Co-Managers

Jackie Oleson
 Geri Zehren

Port Exploreum/1860 Light Station Manager

Patrick W. Curtiss

1860 Light Station Volunteer Coordinator

Andrea Cole

Program Coordinator

Mary Flierl

Newsletter

Majka Drewitz
 Michele Weiland

Contact information

P.O. Box 491
 Port Washington, WI 53074

Resource Center

205 N. Franklin Street
 RC: 262-268-9150

Website

www.pwhistory.org

Historical Perspectives

is published 3 times per year



President's Message

Dear Members,

Being strategic . . .

Your *Board of Directors* has been involved in a strategic planning exercise since last November to evaluate the *Society's* existing mission statement in light of current opportunities and future goals. This effort was organized by Dawn St. George, our Executive Director. Michael H. Dickmann, emeritus professor in the Department of Educational Leadership at Cardinal Stritch University, has led our planning sessions *pro bono*. The sessions have been held at the new Port Washington State Bank Community Room at 218 East Washington Street.

What has become abundantly clear is that our greatest assets are our volunteers, donors and members. Our volunteers keep our operations going, our collections growing, and make our programs possible. Our donors financially support *Society* operations and programs. Our members support our efforts by donating to our collections, attending our programs and spreading the stories of Port Washington's past to our community and its visitors. The last couple of pandemic years have strained our resources, limited our volunteers and reduced our active membership. However, you can rest assured that we are thinking strategically about how to increase the number of our volunteers, members and donors, and how to utilize and preserve our facilities and collections for Port Washington's future use and enjoyment.



Our members support our efforts by donating to our collections, attending our programs and spreading the stories of Port Washington's past to our community and its visitors. The last couple of pandemic years have strained our resources, limited our volunteers and reduced our active membership. However, you can rest assured that we are thinking strategically about how to increase the number of our volunteers, members and donors, and how to utilize and preserve our facilities and collections for Port Washington's future use and enjoyment.



Nancy Holley,
 President
 Port Washington
 Historical Society
 Board of Directors



Dawn and Michael discuss the agenda for the last planning meeting



EXECUTIVE DIRECTOR'S UPDATE

This past month was a wonderful reminder of why we all embrace the vagaries of spring in Wisconsin. It can reach 70 degrees one day and snow the next day. Either way, the light has changed, and the days are growing longer. Spring is upon us.

And joy is in the air as I watched the completion of the lifeboat shelter and planned for the June 3 *Family Fun Day* celebration for the reopening of the *1860 Light Station*. We are hopeful that this year visitation at our historic lighthouse will approach pre-pandemic numbers. The world may never be the same, but it is good to affirm that there is always a place and a need to experience our heritage in the presence of historic artifacts and other people.

Other upcoming experiences, where you can discover your history, include our speakers' presentations

which range this year from the *1862 Civil War Draft Riot to Lake Michigan shipwrecks*. Speaking of shipwrecks, we will be mounting an exhibit at the *Resource Center* this summer of shipwreck artifacts from our own collection. Spring is an exciting time in Wisconsin and our new walking and audio tours are the perfect way to showcase our historic town to family and friends. You will learn more about all these things to do as you read the newsletter.

On another joyous note, it is an honor to have been selected to serve on the *Wisconsin Shipwreck Coast*

(Continued on page 9)



Wreck of the schooner Northerner

RESOURCE CENTER NEWS

This past Fall the Lake Michigan interactive table and the Ozaukee Press interactive table were relocated to the *Resource Center* from the *Port Exploreum*. The Lake Michigan table displays not only current weather conditions and vessels traveling the lake, but also many of the shipwrecks of the past. The Ozaukee Press table displays the history of Port Washington, its events, and places.

Summer *Resource Center* exhibits will include visiting the wreck of the *Toledo* through *Society* artifacts and remembering the *Korean War* as seen through the eyes and the photos of Roy Zehren who served there for 15 months, 1952 into 1953. His photos show aspects of the war, the countryside and the people of Korea.



A view from Roy's hillside bunker

release. He also took many personal photos and slides with his 35mm camera, always trying to



Roy's M.A.S.H. photo

capture the souls and hearts of the Korean people.

Roy's slides have been donated to the *Wisconsin Veterans Museum* in Madison where staff transferred 780 of his original slides onto a DVD. The summer exhibit in the *Resource Center* will feature some of these slides.

If you or someone you know served in Korea and wish to participate in this exhibit either with a donation or a loan of an artifact, please contact us at porthistinfo@gmail.com or leave a message at the *Resource Center* by calling 262-268-9150.

Archivists these past months have been working their way through two large donations, the

first of which being the carpentry tools of Nic C. Peters, a Port Washington

carpenter who worked his trade in the late 1880s into the early 1900s. His toolbox contained many tools of the trade, including braces, bits, planes, saws, wood folding tape measures, a wood level,



Roy's underground bunker



Girl with Christmas present

(Continued on page 11)

1860 LIGHT STATION REPORT

The lighthouse is currently closed for the season, but we are available for pre-arranged private tours.

Currently, we are making some exciting plans for the coming 2023 season. The season officially starts Memorial Day weekend, May 29, and continues through to September 4, Labor Day Monday. You will hear more about some of our plans as you read through this newsletter.

The 2023 lighthouse season promises to be our best season yet! We hope to see you there, and you may want to consider becoming one of our *Port Washington Historical Society* volunteers.

Patrick W. Curtiss
1860 Light Station Manager



**The Doors are Open,
The Light is On!
Come Join our
Team of Volunteers!
Step Up and Share the View
Get Involved!**

Email us: 1860lighthouse tours@gmail.com

Phone: 262-268-9150



FAMILY FUN DAY AT THE LIGHT STATION

Time to Celebrate!

Saturday, June 3, 11:30 a.m. - 4:00 p.m.

Oh, the fun we'll have with the annual reopening of the lighthouse to visitor tours. Join us on the lawn for a spectacular event on Saturday, June 3. Watch artist demonstrations and play family-friendly games. Listen to live music while you make your own lighthouse to take home. There will be free ice cream from Cedar Crest while supplies last. And, best of all, the tower will be open and waiting for you to climb to the top.



Saturday, June 3rd 2023
11am - 4pm

IT'S COMPLETE!

Landscaping to Follow

Thanks to *Fine Line Carpentry* for recently completing the open design exhibit and protective shelter for the restored lifeboat from the shipwreck rail car ferry *SS Milwaukee*. Construction began late last fall and was completed in March. There's still landscaping to do once it warms up.



Boat shelter before the final cleanup

But we're so

proud of the effort by so many dedicated people beginning with the design and architectural drawing generously donated by architect Mike Ehrlich. We are grateful for the initial funding for the project which was donated in honor of Marshall and Edith Moeser. When post-pandemic construction funds increased, additional funding was received from the *Wisconsin Tourism Capital Grant Program*.



The beautiful red roof accentuates the boat shelter

We're hoping that the lifeboat can be one of the first boats moved this spring by Jim and Mike Burt from *Great Lakes Marine Services* to its new home on the west side of the *Light Station*. Another couple of folks to thank!



- Docent-led tours
- Art activities for all ages
- Artist demonstrations
- Welcome back the restored lifeboat
- Free treats from Cedar Crest Ice Cream
- Live Music



MAGICAL HISTORY TOURS

This summer, along with our wildly popular walking tour of the historic buildings in downtown Port, you may pick up maps of three exciting new walking tours from the *Resource Center* and/or the *Port Washington Visitors Center (Pebble House)*. One new walking tour is a guide to the *Seven Hills and Seven Stairs of Port Washington*. Taking that tour will get your heart rate up and keep the kids busy. The second new walking tour is a guide to Port Washington's historical markers.

The maps of these walking tours are made possible through your memberships and donations. So, when you have family and friends visiting and you want to showcase our beautiful historic downtown, take them on one of the walking tours. They will fall even more in love with our lakeside village.



SHIPWRECK WALKING TOUR

The *Port Washington Historical Society* will soon release an app-based *Shipwreck Walking Tour of Port Washington*, the brainchild of PWHs board member and children's author, Barbara Joesse, and Executive Director, Dawn St. George. The recorded voices of Joesse and her brother, Don Monnot, take visitors and guests along the marina, entertaining them along the way with dramatically told stories of six shipwrecks, in the style of an old-time radio program, complete with sound effects, photographs and dramatic dialog.

Designed to entertain and educate, the tour will take advantage of some of the best views in Port Washington. It will tell both the story of the shipwrecks and the story of Port Washington itself, offering visitors a peek into the dramatic, historic elements that formed our town. It takes visitors from the *1860 Light Station* to Heart of the Harbor, Rotary Park, Fisherman's Park and Coal Dock Park. Except for the link between the *1860 Light Station* and Heart of the Harbor, the entire walk is wheelchair (and stroller!) accessible.

After the initial idea, Joesse and St. George met with Russ Green, superintendent of the *Wisconsin Shipwreck Coast National Marine Sanctuary (WSCNMS)*. The pair wanted to create a pilot for the sanctuary, with Port Washington as the first southern stop along the shipwreck coast. They hoped other communities (Sheboygan, Manitowoc and Two Rivers) might extend the tour within the next year or two based on the pilot created by Joesse and St. George.

Normally, the app would cost \$6 to download, but Green was very enthusiastic about the idea and the sanctuary organization has offered to pay for the first 1,000 visitors to the app site: *VoiceMap*. Once loaded

onto your phone, the app can be used again and again, and can start and stop as the user chooses. The *VoiceMap* app will be co-hosted and promoted by PWHs and the WSCNMS.

The stories will include: an introduction to the *1860 Light Station*, the *SS Milwaukee*, *Niagara*, *Mary Ludwig*, fisherman sculpture at Rotary Park, Smith Bros. FISH building, *Senator*, *Toledo* and *Northerner*.

To enhance the experience of the tour, PWHs' spring exhibit will be a collection of shipwreck artifacts displayed at the *Resource Center*.

The tour's official launch will be on *Family Fun Day at the Light Station* on June 3, 2023.

Barbara Joesse
Port Washington Historical Society Secretary

VOLUNTEERS NEEDED

Do you enjoy talking about the history of Port Washington? Meeting others? Being a part of an endeavor that supports the *Historical Society*?

We need your help. There are many ways to help out, whether at the *1860 Light Station*, *Resource Center* or society programs or activities.

If you can help, please email us at porthistin-f@gmail.com or call us at 262-268-9150.

Follow us on
Facebook and Instagram!




@porthistory


@PortWashingtonHistoricalSociety
@1860LightStationMuseumPortWashingtonWI

Port Washington Historical Society's Mission Statement

To create opportunities for inspirational discovery through preservation, education and exploration of the Port Washington area's history and its maritime environment.

SEASONAL HOURS

Resource Center

205 North Franklin Street

Monday & Thursday

1:00 p.m. — 4:00 p.m.

and by special appointment

Beginning June 3:

Monday, Thursday & Friday

1:00 p.m. — 4:00 p.m.

Saturday 10:00 a.m. — 2:00 p.m.

Phone: 262-268-9150

1860 Light Station

311 Johnson Street

May 27 through September 3

Saturday & Sunday 11:30 a.m. — 4:00 p.m.

Please contact us at 262-268-9150



NEW MEMBERS & RENEWALS

*Thomas and Allison Antoine
Nancy Bodenstein
Robert and Sue Boland
Allen Buchholz
James and Mary Burmesch
Suanne Cavanaugh
Lynn Costentine
Majka and Adrian Drewitz
Diane Fowler
Andy and Susan Gumm
Jerry and Diana Gutzman*

*Kent Knudsen
Terrence Knudsen
Don and Lynette McCown
Louise Mollinger and David Franks
Terry and Mary Murphy
James and MaryJo Pauly
Allen Salyer
Erna Schatzman
Jane and Mike Spaulding
Julie Wirgau
Marie and Gary Zirbes*

PORT'S FIRST GAS STATIONS — NOW DISAPPEARED

When automobiles became the mode of transportation at the turn of the century there was a demand for fuel to operate the cars.

Before gas stations existed, motorists bought gasoline from hardware stores, general stores, pharmacies, blacksmiths, etc. The fuel was available in five-gallon cans which were stacked



Standard Service Station



Dee Bee's Mobil

near the curbs. The fuel was poured into the gas tank of the automobile using a funnel. This was quite dangerous. After a series of fires and explosions, regulations forced businesses selling gasoline to be moved from city centers to

the roadways beyond the cities. This called for creating a filling station that evolved into what was then a gas station with a gas pump. The gas pump is a subject in itself because it began as a hand pump with no measurement device. Over time it evolved into a complex machine measuring gallons pumped and calculating prices.

Some of the first gas was sold at dealerships, but individual stations began to serve all areas of the city. Many of what were gas stations have disappeared. Here is a listing of some of the past gas stations in Port Washington:

1. Fulop's Clark Station on Grand

- Avenue (plans for "green" station abandoned in 2011)
- 2. Dee Bee's Mobil Service at 404 N Franklin St.
- 3. D-X Gas & Oil owned by Romie Eidenberger (1952)
- 4. Biever Oil Company at 765 Grand Ave.



Sinclair Service Station



Standard Service

- 5. Dixie Oils Gasoline Service Station (1927)
- 6. Port Amoco at 223 W Grand Ave. It changed to Beck's Grand Ave Mini Mart in 2005. Before it became Port Amoco, it was The Standard Station run by Harold Muehlberg

who sold it to Harold Hayes in 1943. Harold retired in 1968. In 1975 Jos. Mueller was the Prop.

- 7. Peiffer Auto Service opened in 1952 on site of the former Eidenberger Garage. The



Peiffer Auto Service



Jess Moon's Standard Service



Otto Blumenberg's

business sold many different brands of gasoline, including Pate, Enco, Exxon, Oklahoma, City and Union 76. They had full-service pumps but added self-service in the '70s. They closed in March 2007. In 2000 they discontinued the gasoline pumps.

- 8. Port Service Station, owned by John C. Kohl, Jr. (1923 -1941)
- 9. Port Washington Standard Auto Service

(Continued on page 9)

PWHS AGAIN HOSTS A SATURDAY BEER GARDEN IN UPPER LAKE PARK

This year we'll be tapping kegs for a third straight year on Saturday, August 5, to fundraise for the *Historical Society*. If you'd like to volunteer, we'd love to hear from you. Shifts are usually 2 hours.

We'll need more volunteers this year as we'll also be grilling brats and burgers to sell. Our proceeds are combined with other local nonprofits including the *Friends of Port Washington Parks and Rec* and split at the end of the season. We do keep our tips from the day,

so even if you're unable to volunteer, we'd love to have you come out and support our mission. Summer is just around the corner.

Woo-hoo... and PROST!



(Continued from page 8)

10. Port Standard Service at 134 E Grand Ave. Joe Mueller (1966)
11. Quik Stop Shoppes
12. Sinclair Service Station at 702 W Grand Ave, owned by Jerry Kietlinski (1954)
13. Jess Moon's Standard Service at 134 E Grand Ave - now Harborview Cleaners
14. Swatek Oil Co. at 483 W Grand Ave. sold Super Shell Gasoline
15. Ted's Cities Service at 230 S Spring St. Ted Flierl took over the Cities Service Station from Otto Blumenberg in 1936. He ran it until he retired. The station is now a residence.



Ted's Cities Service

16. Virgil's Gasoline at 1557 N Wisconsin St. (1961) - Virgil's filling station was open for business at the north side of Port Washington at N Wisconsin and Beutel Road. In 1961 Virgil Eidenberger was the owner and proprietor. He offered Spur gasoline. Now Tires Unlimited is at that location.
17. Butch's Texaco Service at 1605 N Wisconsin St (1975)

As electric cars become more popular, the demand for gas may decrease. This could lead to gas stations becoming less common, or even obsolete. Many may be replaced with charging stations that will recharge the battery of an EV within minutes. But that is another topic for another day.

(Continued from page 3)

National Marine Sanctuary Advisory Council as the representative for the History, Heritage, and Public Interpretation seat. The first meeting was held at the *Wisconsin Maritime Museum* in Manitowoc on March 16. It was a pleasure to meet with other council members and members of the NOAA team. We will be meeting bi-monthly at cities bordering the Sanctuary coast. I am looking forward to hosting one of the meetings in Port Washington.

Finally, a big shout out to Grace Eernisse for impeccable



timing in rescuing the former *Wilson House Restaurant* sign from the dumpster. We have added it to our

collection, preserving a special piece of Port Washington history for generations to come.

With all that is happening this spring and summer, there is simply no better time to renew or upgrade your membership. It is a real investment in our future and helps fund our programming and projects. As always, thank you for the support you show your *Society*.

Dawn St. George, PhD
Executive Director



DONATIONS & MEMORIALS



SOCIETY DONATIONS

Kate Brown
 Jerry & Diana Gutzman
 Allen Slayer
 WE Energies Foundation, Inc.

ANNUAL APPEAL

George & Mary Jo Bichler
 James & Mary Burmesch
 Pat & Yvonne Curtiss
 Walter & Judith Dauska
 Mike & Jodi Dickmann
 Michael & Alison Didier
 Mary Flierl
 Vaughn & Carol Hallada
 Paul & Joan Hansen
 Gwen & Bryon Johnson
 Barbara Josse
 Gary & Trudie Kelly
 Ken & Pat Kozak
 Richard Laske
 Raymond G. Meyer II

Elaine Nulph
 Eric & Jackie Oleson
 James & Mary Jo Pauly
 Virginia Pierson
 Mark & Cathy Schowalter
 Ronald & Elizabeth Schowalter
 Steve Schowalter
 Dean & Norma Jean Shaver
 Doug Smith
 A. Lu Steinert
 Theodore Stott
 Lawrence & Diana Verheyen
 Barbara Wengert
 Geri Zehren

MEMORIALS

In Memory of Leroy Bley
 Robert & Kathleen Bentley
 Amy Bley
 Mary Bley
 John & Gladys DeMerit
 James & Susan Didier

Giacomo Fallucca, Palermo's
 Mary Flierl
 Todd & Kathy Gordon
 Congressman Glen Grothman
 Mary Fran Lepeska &
 Pat Tearney
 Eric & Jackie Oleson
 Mary Kay Schuknecht
 In Memory of Laura Goeden
 Mary Flierl

SOCIETY IN KIND DONATIONS

Pat & Yvonne Curtiss
 Fleet Farm, Grafton
 Port Washington Kiwanis

ARTIFACTS, ARCHIVES, PHOTOGRAPHS

Grace Eernisse
 Jim Pape

PWHS TUESDAY NIGHT SPEAKER SERIES

The PWHS Tuesday Night Speaker Series is brought to you by the Port Washington State Bank. Our first speaker this year will be David Zeh on May 16 who will be presenting his research on *Captain Pabst and the Port Washington Draft Riot*. Following him, on June 3, will be diver Brendon Bailod who has titled his talk, *The Ghosts of the Ozaukee Coast: Port Washington's Shipwreck Graveyard*. Brendon will also be displaying recovered artifacts from his many dives to shipwrecks in the Great Lakes. In the fall, Dr. Patrick Jung will present *Nicolet and Marquette in Wisconsin: The History of the Early French Period, 1634-1675* on Tuesday, September 19, at the PWSB Community Room.

All the talks will take place at the Port Washington State Bank Community Room at 218 E. Washington Street beginning at 7:00 p.m. Reservations for the talks can be made through our website at pwhistory.org. We recommend making reservations as the talks usually fill up before the evening of the presentation. Admission is free for members of the *Port Washington Historical Society* and \$5.00 for nonmembers.

You may join or renew your membership on our website. FYI, only members may attend our annual meeting and speaker presentation in October, and you won't want to miss it. Following the annual meeting which begins at 7:00 p.m., Dr. James Skibo, state ar-

chaeologist, will be discussing the indigenous canoes found last year in Madison's Lake Mendota. You can find further information on all the speakers in the calendar on the back page of the newsletter.

THE KOREAN WAR - CALL FOR EXHIBIT ITEMS

The *Resource Center* is looking for help with its exhibit on the 70th anniversary of the Armistice that formally ended the war in Korea.

If you have items that can be lent to the *Port Washington Historical Society* for the exhibit, we would be most grateful.

If you can contribute, please leave a message at 262-268-9150 and someone will get back to you.

JOIN

The Port Washington Historical Society



Preserving the past for future generations

"Our mission is to create opportunities for inspirational discovery through preservation, education and exploration of the Port Washington area's history and its maritime environment."

The Port Washington Historical Society is supported through donations and memberships from individuals, foundations and corporations. By becoming a member you can help provide the support to ensure the continued success of the Resource Center and the 1860 Light Station and play a vital role in preserving the history of Port Washington.

ALL MEMBERS RECEIVE:

- Free admission to the 1860 Lighthouse Station and PWHS Resource Center
- Free admission to special events and speaker series
- Free guest passes for friends and family
- The *Historical Perspectives* newsletter
- Free admission to the Research Center at the Luxembourg American Center in Belgium, Wisconsin

YOU CAN ALSO JOIN ONLINE AT: PWHISTORY.ORG

MEMBERSHIP APPLICATION

Choose your membership level

Individual \$40
 Family \$75 Membership Level Amount \$ _____
 Honor Donor \$250 Additional Gift Amount \$ _____
 Patron Donor \$500 Total Amount Enclosed \$ _____
 Yes, I want to be a volunteer. Please send me more information.

NAME _____

ADDRESS _____

CITY _____ STATE _____ ZIP _____

PHONE _____

EMAIL _____

AMOUNT ENCLOSED _____

VISA MC AMEX DISC CVV _____

CARD NO. _____ EXP _____

SIGNATURE _____

MAKE CHECKS OUT TO : THE PORT WASHINGTON HISTORICAL SOCIETY

Port Washington Historical Society
P.O. Box 491 Port Washington, WI 53074

(Continued from page 3)

and items that we struggled to figure out their function.

His treasures prompted us to add a catalog of tools, *Dictionary of American Hand Tools*, to our library of reference materials. Needless to say, our volunteers have learned much about tools of the 1800s, and also that many hand tools have been replaced with electrical ones.

This collection had been on display in the 1860 Light Station generator building. Work progresses on the cataloging of the contents of the 1860 Light Station buildings. Five volunteers have spent the past 10 months on this work.

The second large donation is Russell Knetzger's city development plans from the time he worked with the City of Port Washington. These site plans extend to areas across the city and document many of the changes that happened in the 1970s and 1980s.

Thanks to the *Kiwanis Club* we now have printed editions of the updated *Architectural and Historical Intensive Survey Report* done for the city by the *Wiscon-*

sin Historical Society. The 144-page document gives an overview of the history of the city, summarizes the thematic research and survey results, and gives recommendations to the *Port Washington Planning Commission*. It covers notable places and people of the community. Stop and browse. You will recognize many of 518 resources of architectural or historical interest.

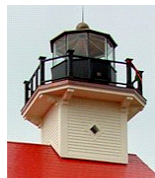
The *Resource Center* will return to summer hours the first weekend of June — open Monday, Thursday, and Friday 1:00 p.m. - 4:00 p.m. and Saturday 10:00 a.m. - 2:00 p.m.

Leroy Bley covered our Friday hours these past 10 years, so we are now especially in need of someone to cover those days so the *Resource Center* can be open to visitors. Please consider joining our crew of volunteers. Email porthistinfo@gmail.com or call 262-268-9150 if you can help.

Geri Zehren & Jackie Oleson
Resource Center Co-Managers



Peters' toolbox



Port Washington Historical Society

P. O. Box 491
 Port Washington, WI 53074-0491
www.pwhistory.org

Save the Date

2023 Gala: Thursday Night Fever
 Thursday, July 20: 5 p.m. to 9 p.m.
Flannery's at Fire Ridge Golf Club, Grafton

Speaker Series: David Zeh

*Captain Pabst and the Port Washington
 Draft Riot*
 Tuesday, May 16: 7:00 p.m.
 PWSB Community Room*

Family Fun Day at the 1860 Light Station

Return of the Lifeboat
 Saturday, June 3: 11:30 a.m. - 4:00 p.m.
 1860 Light Station

Speaker Series: Brendon Baillod

*Ghosts of the Ozaukee Coasts: Port Washing-
 ton's Shipwreck Graveyard*
 Saturday June 3: 6:00 p.m.
 PWSB Community Room*

PWHS Hosts the Beer Garden

Saturday, August 5: 1:00 p.m. - 8:00 p.m.
 North Bluff, Upper Lake Park

Speaker Series: Dr. Patrick Jung Baillod

*Nicolet and Marquette in Wisconsin: The History
 of the Early French Period, 1634-1675*
 Tuesday, September 19: 7:00 p.m.
 PWSB Community Room*

PWHS Board Meeting/ Annual Members Only Meeting

Presentation by Dr. James Skibo and Amy
 Rosebrough
*Wisconsin Historical Society's State Historic
 Preservation Office: What's Canoe With You?*
 Wednesday, October 18: 6:00 p.m.
*Board meeting at the Resource Center followed
 by annual members' meeting at the PWSB Com-
 munity Room**

**PWSB Community Room, 218 E. Washington St.*