



Historical Perspectives

Discovering Our History

1860 Light Station and Resource Center



VOLUME 35, ISSUE 3

WINTER 2024

LIGHTHOUSE GARDEN VOLUNTEERS

Have you noticed the lovely garden at the lighthouse? In 2019 the Historical Society was able to purchase the lot adjacent to the 1860 Light Station Museum through the generosity of Shirli Flack who made the purchase possible and Sam DeMerit who contributed to the landscaping. Over the years the garden has evolved as some plantings were able to survive despite browsing rabbits and deer, while others were replaced.



In 2022 the Ozaukee Master Gardeners (OMG) began a cooperative effort with the Historical Society to maintain the garden and plantings at the lighthouse. Each year the Historical Society and OMG provide additional funds for the purchase of plantings and materials for the garden. In addition, OMG provides volunteers who work to maintain

the garden and other plantings around the lighthouse. This garden not only enhances the property but also provides plantings for pollinators. Thank you to the volunteer gardeners who come from the Ozaukee Master Gardeners, the Historical Society, and the community.

Follow us on
Facebook
and
Instagram!



- @PortWashingtonHistoricalSociety
- @1860LightStationMuseumPortWashingtonWI
- @porthistory

Inside this issue:

<u>President's Message</u>	2
<u>Donation Offer</u>	2
<u>Executive Director's Update</u>	3
<u>Resource Center News</u>	3
<u>1860 Light Station Report</u>	4
<u>Old St. Mary's Cemetery Tour</u>	4
<u>New Exhibits at the Resource Center</u>	5
<u>Paint on Port Mural Program</u>	5
<u>Union Cemetery Walk</u>	5
<u>Ray Buivid: His Athletic Story</u>	6
<u>Speaker Series A Success</u>	8
<u>Membership Form</u>	8
<u>In Memoriam</u>	9
<u>New Member and Renewals</u>	9
<u>Donations and Memorials</u>	10
<u>Thank You, Volunteers</u>	10
<u>Thank You, Directors - Old and New</u>	11
<u>Holidays in the Harbor Open House</u>	11



Board of Directors

Barbara Joosse, President
 Julie Christiansen,
 Vice President
 Kevin Grady, Treasurer
 Mary Ackerman, Secretary
 Majka Drewitz
 Mike Keller
 Mary Fran Lepeska
 Donald McCown
 Grant O. Smith
 Nancy Holley, Past President

PWHS Exec. Director

Dawn St. George, PhD

Resource Center Co-Managers

Jackie Oleson
 Geri Zehren

Newsletter

Majka Drewitz
 Michele Weiland

Membership

\$40 Individual
 \$75 Household

Philanthropic Levels

\$250 Honor
 \$500 Patron

Contact information

205 N. Franklin Street
 Port Washington, WI 53074
 262-268-9150

www.pwhistory.org

Click

Historical Perspectives

is published 3 times per year

President's Message

Dear Members,

Hello! I'm the newly minted president of the Port Washington Historical Society. As an author, I fell in love with Port Washington through its dramatic history. My goal as your new president is to do the same for residents and visitors to our amazing little city!

I wrote *The Fishermen, the Horse and the Sea*, a true Port Washington story that features the Smith



Barbara Joosse, President
 Port Washington Historical Society Board of Directors

brothers. I just sent a new manuscript to my agent that features our shipwreck, Niagara, and wrote the app-based shipwreck walking tour. Through my writing, I'll continue to shine a spotlight on the town I love.

Other nearby communities feature historical sites and business. In Port, because of our lake and the people who live here, we have a different kind of history. Gritty. More dramatic. Exciting. I consider our historical heritage to be our greatest asset in Port. I intend to make my enthusiasm contagious.



DONATION OFFER

Barrett Genson, a local artist, has proposed to paint or draw a perspective of your home or a favorite Wisconsin scene for a fee, with the greater portion of the fee gifted to the Port Washington Historical Society.



The artwork could range from a 9" x 12" to 11" x 14" to 15" x 15" unframed. The fee will be between

\$200 and \$500 depending on the size and the medium. Twenty percent of the fee will be used to purchase art supplies for the proposed artwork and 80% of the fee will be donated to PWHS. If you are interested in a custom-created artwork of your choice, please contact the Historical Society.



Barrett Genson

Thank you for considering the purchase of Genson's artwork to benefit the efforts of the Port Washington Historical Society.

EXECUTIVE DIRECTOR'S UPDATE

As this year's beautiful fall weather fades and a new year is at hand, I'm thankful for your past support of the Port Washington Historical Society. Through your memberships and generous gifts, we've been able to accomplish so much this year:

- Replaced the eight signs at Rotary Park commemorating the Port Washington Commercial Fishing Industry Families
- Started the new *Resident Keeper Program* to assist local volunteers which allowed the 1860 Lighthouse Museum to increase guest visitation because we were open five days a week
- Continued our speaker series and author presentations / book signings — all open to the public
- Opened a new exhibit at the Resource Center in partnership with NOAA to increase visitor knowledge of the recently designated Wisconsin Shipwreck Coast National Marine Sanctuary

We're dreaming of the following new and exciting things for 2025:

- Working closely with *Paint on Port*, in its third and final year, to develop murals with historical themes
- Developing member tours to historical sites in or near Wisconsin
- Collaborating on exhibits and sharing new event opportunities with other community organizations and nearby historical societies

Port Washington's history is one of our greatest treasures. Help us make our history more visible to our community by giving a gift to our 2024 Annual Fund. You can make a difference. You will be receiving our donation request and return envelope in your home mail this week. Thank you for considering contributing to our Annual Fund.

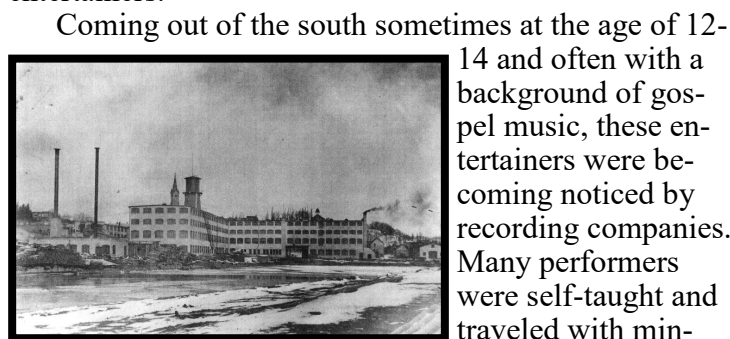
With warmest wishes for a happy holiday season and new year!

Dawn St. George, PhD
Executive Director

RESOURCE CENTER NEWS

The Resource Center's history exhibit for 2024-2025 will focus on *Paramount Records* and its place in Port Washington's history. The exhibit will open in December of 2024.

Paramount Records, a subsidiary of the furniture company *Wisconsin Chair Co.* founded in 1888 by Fred Dennett, helped to put Port Washington on the map and a place in the early history of the Blues. Established in 1917 as a way to promote the sale of the phonograph cabinets it built, also called "talking machines" as they were powered with a wind-up crank, the record company sought to give itself more credibility by using the label *The New York Recording Laboratories*. Recording a wide range of music and often struggling with poor quality and no profit, the record company finally found success by creating its own niche with American Black entertainers.



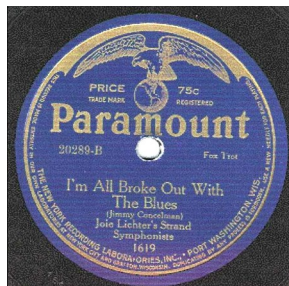
Coming out of the south sometimes at the age of 12-14 and often with a background of gospel music, these entertainers were becoming noticed by recording companies. Many performers were self-taught and traveled with min-

strel groups before branching off on their own or in later years with a band. Some bridged a transition from vaudeville into what would become the Blues.

By 1922 *Paramount* was pressing records for *Black Swan Records*, producing "race records," recordings by and for African Americans. These records would become *Paramount's* most famous and lucrative business, pressing in Chicago, Richmond, Indiana and New York, making *Paramount* the most dominant in the business. As business began to wane in 1929, *Paramount* set up a recording studio in its Grafton furniture factory to continue making, besides their own recordings, those of regional bands and popular artists under the labels of *Broadway*, *Puritan*, *Famous*, and *Paramount*.

With the advent of the radio and the Great Depression, many record companies went out of business. *Paramount* ceased recording in 1932 and closed down in 1935. The majority of *Paramount's* metal masters were sold for their scrap metal value. The *Wisconsin Chair Co.* in Port Washington ceased operation by the mid-1950s, and the land eventually sold and redeveloped. A series of markers recognize The Blues Trail from Mississippi into Wisconsin with markers at the site of the *Wisconsin Chair Co.* location of its Grafton recording studio and in Port Washington at the site of the *Wisconsin Chair Co.* The Grafton site is along the Milwaukee

(Continued on page 7)



1860 LIGHT STATION REPORT

What a summer it was! Everyone enjoyed having the lighthouse museum open 4 hours a day, 5 days a week. We were so fortunate to host 24 Resident Keepers who were enthusiastic summer guides. Some even dressed the part! Admissions and Museum Store sales were up over 2023 thanks to being open more and the willingness of the Resident Keepers to do whatever they could to ensure the museum guests enjoyed their visit.



Family reunion



September bus tour

As always, we cannot give enough praise to our local volunteer guides who were knowledgeable mentors to the new Resident Keepers and supported them on Saturdays and Sundays. We encourage you to join our local volunteers next summer. Please email porthistinfo@gmail.com if you would like to volunteer. We are also incredibly



Resident Keepers Nicole and Dave

grateful to Andrea Cole for her outstanding dedication and hard work as the 1860 Light Station Museum Volunteer Coordinator over the past three years. Her efforts in organizing tours, coordinating visits from local newspapers and TV news stations, and, along with Carol Jarosz, developing

the self-guided tour significantly enhanced the museum's visibility and visitor experience. Andrea's passion and commitment have truly had a lasting impact on our community and the preservation of our local history.

Thank you, Andrea, for your unwavering support and invaluable contributions. Your leadership and creativity have brought new life to the 1860 Light Station Museum, making it a cherished landmark for all who visit.



Resident Keepers Cori & Rob

OLD ST. MARY'S CEMETERY TOUR

The Historical Society hosted a tour of the Old St. Mary's Cemetery on 5 October, 2024. The tour was led by Kevin Wester and members of the St. Mary's Cemetery staff. The tour attracted over eighty interested participants. It included not only information regarding the history of the cemetery and its historical residents, but also instruction regarding the proper procedure for cleaning cemetery monuments.

Old St. Mary's Cemetery was purchased in 1854 in what was the Town of Port Washington and outside the village city limits. Wester described the families located in



plots around the cemetery including the Thill Mausoleum and the "Poor Souls" chapel. Saint Mary's first pastor, Father F. S. Sailor, and his good friend and fellow pioneer priest, Father Fabian Bermadinger, are buried beneath the chapel.

We are excited to announce that Kevin Wester will be giving a tour of St. Mary's Church next summer. We'll have more details for you in our April 2025 newsletter.

NEW EXHIBITS AT THE RESOURCE CENTER



Exhibit installation MKE Graphics

In partnership with the *Wisconsin Shipwreck Coast National Marine Sanctuary* and their parent organization, the *National Oceanic and Atmospheric Administration*, a new maritime exhibit area has been installed on the south side of the first floor of the Resource Center

designed to inform visitors of the many aspects of the recently designated *Sanctuary*.

Along with informational wall panels, a new vertical interactive table was added which pictorially illustrates and maps the 36 historic shipwrecks currently



documented within the *Shipwreck Coast Sanctuary*.

A second kiosk showcases videos of marine archaeologists diving and exploring Lake Michigan shipwrecks found within and outside the sanctuary.

A third interactive, the former Lake Michigan Table was reprogrammed with new software. It now shows historic routes of people immigrating to the Great Lakes States and commerce routes throughout the Great Lakes in the late 1800s and early 1900s.

The Resource Center is open year-round for viewing the exhibits from 1:00 p.m. to 4:00 p.m. on Mondays and Thursdays.



Historical routes

PAINT ON PORT MURAL PROGRAM

The Paint on Port Mural Program started in 2023 with the goal of creating twelve murals around the city. The director of Main Street Inc., Kristina Tadeo, with the assistance of Eileen Grace, Project Manager for the Port Mural Program, will have completed nine murals by the end of this year with plans of three more in 2025.

Do most members of the Port Washington community know where all of the murals are? Some are quite visible, but others are found in somewhat hidden locations. See if you can match the Mural with the correct location. Answers are on page 11.

Port Mural Quiz

- | | | | |
|---|--|---|--|
| 1 | Ode to Shirley Schanen Gruen and her love of Port Washington | A | 549 W. Grand Ave. (West Wall) |
| 2 | Midwest Mosaic Mural | B | 407 E. Jackson St. (West side in front of Newport Shores Condominiums) |
| 3 | Branching Out Community | C | 1000 N. Wisconsin St. |
| 4 | Roots and Reflections | D | 108 N. Franklin St. (East side of building) |
| 5 | Take Flight | E | 528 W. Grand Ave. (retaining wall) |
| 6 | Everyone Comes to the Water for Some Reason or Another | F | 308 N. Franklin St. |
| 7 | Freedom is the Natural Right for Every Being | G | 107 N. Franklin St. (South Wall) |
| 8 | People's Wall Community Mural | H | Jackson St. retaining wall at Wisconsin St. |
| 9 | Wildflower RePORT | I | 126 E. Main St. (South wall) |

UNION CEMETERY WALK

Thank you to Ken Grigas, Allon Bostwick, and Pat Poole for a narrated walking tour of the north side of Union Cemetery. Local historian Ken Grigas told of the histories and added insight into some of the earliest immigrants and Civil War veterans buried there. Dr. Bostwick shared stories of members of his prominent family whose graves are at Union Cemetery. Former Funeral Director Pat Poole added his knowledge of cemetery and burial practices in the 1800s.



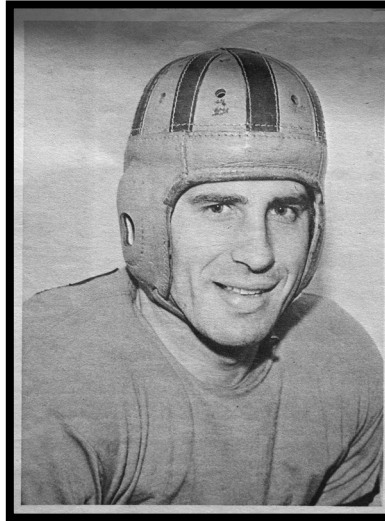
The over 70 participants attending the walk were very enthusiastic about having a similar walk to another section of the cemetery. So look for that to be scheduled in late May or early summer of 2025. We'll have signup information for you in the April 2025 newsletter.



RAY BUIVID: HIS ATHLETIC STORY

While he graduated more than 90 years ago, Raymond “Buzz” Buivid may be Port High’s most accomplished athlete. He excelled at the highest levels of competition in high school, in college and as a professional. He was nationally recognized, and, in many respects, he put Port Washington on the map. After his playing days concluded, Ray served our country in the United States Navy during World War II. He was stationed aboard a destroyer in the Pacific theater, seeing action in several historic battles.

After the war, Ray joined the *General Electric Corporation*. He and his family lived in several cities in the eastern U.S. before finally settling in Cherry Hill, New Jersey, where he passed away in 1972 at the age of 56.



Ray at Port High – Class of 1933

Port High fielded teams in just three sports while Ray was a student: football, basketball and track & field. He was dominant in each of them. While reliable records and statistics from that era are elusive, news accounts and first-person anecdotes make it clear that Ray stood alone as a high-school athlete. No less an authority than Sam DeMerit once said that Ray was the finest athlete he coached during his long tenure at Port High. George Habich, a football opponent from Grafton, simply shook his head when describing what it was like to play against him, “It was almost unfair, he was a man among boys.”

Ray enrolled at Port High for his sophomore year after spending Grade 9 at St. Mary’s School. He quickly emerged as the leader on a talented football team. With Ray at the controls Port was dynastic, going undefeated over three consecutive seasons: 1930, ‘31 & ‘32. In an era of low scoring, the 8-0 1932 team outscored its opponents 223-2.

Even though it was essentially his third sport, Ray was chosen as captain of the basketball team and was the leading scorer in each of his three seasons. Again, statistics and records are scarce, but there is an account of Ray scoring 51 points in a single game – 25 field goals and one free throw. This was at a time when overall team scores seldom eclipsed 40 points. He continued to play – and dominate – in various amateur basketball leagues around the area while he was in college.

Ray had a great love of track & field, which he brought to bear for the Pirates. Sam DeMerit had quickly established Port as a track power upon his arrival in the late ‘20s, winning the WIAA state team championship in 1930. Ray’s first season was in the spring of

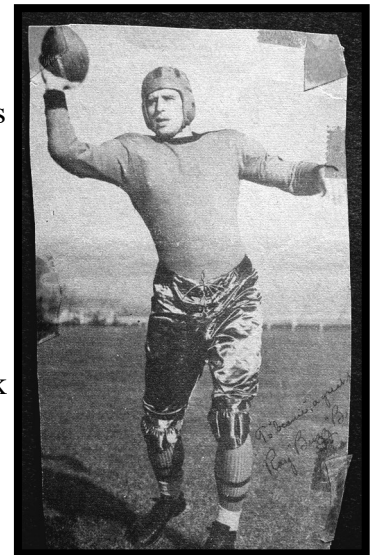
1931. He excelled in the shot put, discus and broad jump, while dabbling in the high jump, 220 and 440 yard runs. He was often referred to in news accounts as “a one-man track team,” usually carrying Port to titles in large meets. He led Port to the 1932 WIAA state team championship, scoring more than half of Port’s points with firsts in both shot put and discus, while taking third in the broad jump. The Buivid family used to joke that Ray’s +48 foot school record in the shot put will never be broken, as the WIAA lightened the weight of the shot several years after Ray graduated! As his high school career came to a close, Ray was the object of an intense college recruiting battle, in all three sports. He was pursued by Wisconsin, Notre Dame, Southern California and Marquette, among others. (As an aside, the minor league Milwaukee Brewers also became

very interested in Ray, even though he wasn’t a baseball player. Their thinking was that an athlete as accomplished as he could become a great baseball player as well).

Ray at Marquette University – 1933-1937

For a number of reasons, Ray’s college choice was Marquette. According to a news account, he was influenced in part by Marquette’s willingness to help him secure an offseason job:

“It was the heart of the depression and jobs were hard to come by.” MU was elated to have Ray, and their coaches were eager to deploy him as broadly as possible. He became a member of the basketball team and was also the leading shot putter and discus thrower on the track team. But it was in football where he achieved his greatest fame, as the starting quarterback for three years.



MU’s football history is far less storied than that of its basketball team (the sport was dropped by the school in 1960). But when Ray was playing, college football was the country’s most popular sport. With Ray leading the way, the Golden Avalanche became one of the strongest programs in the nation, playing the best teams,

(Continued on page 7)

(Continued from page 6)

often on the road or at neutral sites. In those days, the quarterback position emphasized running over passing but Ray excelled at both. He was as accomplished a runner as there was in the college game.

After going 3-6 in Ray's first year as a starter, Marquette lost only one regular season game in each of his last two years. Before he arrived, MU had never defeated Wisconsin. In '35 and '36, they triumphed over the Badgers, with the '35 game a resounding final of 33-0. In his final game, Ray led MU in the inaugural Cotton Bowl Classic in Dallas, where the Avalanche fell 16-6 to Sammy Baugh and the TCU Horned Frogs.

Meanwhile, the awards and recognition piled up for Ray. In his final year, he was a first team All American and finished third in the Heisman Trophy balloting. In a national story on the college All America team, author Alan Gould wrote, "Buzz Buivid, an iron-man who missed only 16 minutes of eight games set the pace for Marquette all season. Buivid belied his reputation as a passing specialist by doing most of the blocking, much of the secondary tackling and a good share of the ball-carrying for the Golden Avalanche." Ray is generally recognized as being the best player in Marquette program history.

Ray in the NFL – 1937 & 1938

The Chicago Cardinals chose Ray with the third overall pick in the 1937 NFL Draft. Soon after the draft, the Cardinals traded their rights to Ray to their cross-

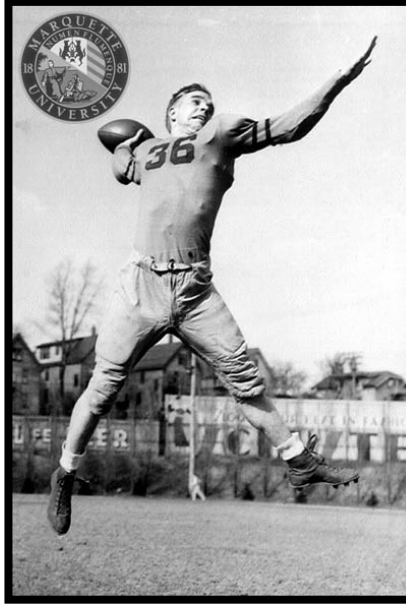
town rivals, the Chicago Bears. Ray initially spurned the Bears for a more lucrative offer from the New York Yankees of the short-lived American Football League. But after a few weeks, he came to terms with George Halas and joined the Bears.

During his rookie year, Ray was the backup QB. In spite of that, he became the first quarterback in NFL history to throw five touchdown passes in a single game, in the season finale against those same Chicago Cardinals. Remarkably, he still holds two NFL records for that performance: most TD passes in a game by a rookie (5) without an interception (shared with Jameis Winston) and most TD passes in a game by a rookie (5), with or without an interception (shared with five others, including Matthew Stafford.) Ray and the Bears played in the NFL Championship game that year, falling 28-21 to the Washington Redskins.

In the sport of football in the late 1930s, the college game was much more popular than the professional game and the salaries were meager. Ray played for the Bears again in 1938, before retiring and going to work in the insurance business. He joined the Navy in 1941, after the attack on Pearl Harbor.

Ray was posthumously inducted into the Marquette University M Club Hall of Fame in 1974. He is one of just 12 MU football players so honored. His 1937 team was also inducted into the M Club Hall of Fame, the only MU football team so honored.

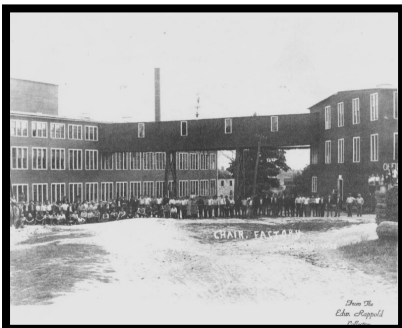
Guest Author: Jack Rooney



(Continued from page 3)

River and the Port Washington site is at the north end of the north slip on the northeast corner of *Inventors Brew Pub*.

The exhibit will share a sample of artifacts from the *Society* collections, the history of *Paramount*, and a look at some of the artists that were recorded. Information is also featured on the Ozaukee Press interactive board located at the Resource Center.



The *Society* thanks the families of Vernon Biever and Roy Zehren for sharing the stories of Vernon and Roy and

their views of World War II and Korea through their photographs. This previous exhibit was well received over the past 18 months. Volunteers working summer and fall hours at the Resource Center often saw 35 or more visitors on a weekend.

We look forward to sharing the history and entertainers of *Paramount Records* in the coming months. The south side of the exhibit hall is dedicated to the *Lake Michigan Shipwreck Sanctuary* where NOAA has installed their informational panels.

The Resource Center has moved to winter hours, open Mondays and Thursdays 1:00 p.m. – 4:00 p.m. and by special appointment. Call 262-268-9150 for questions.

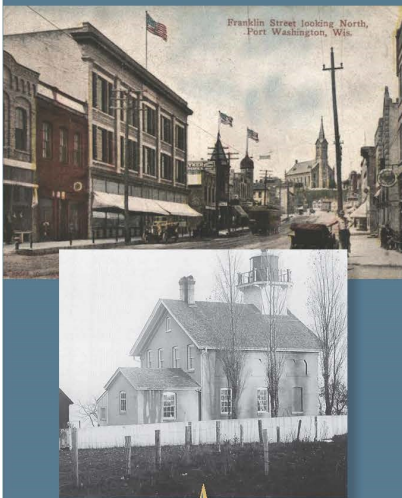
*Jackie Oleson and Geri Zehren,
Resource Center Co-Managers*

PWHS SPEAKER SERIES A SUCCESS



JOIN

The Port Washington Historical Society



Preserving the past for future generations

"Our mission is to create opportunities for inspirational discovery through preservation, education and exploration of the Port Washington area's history and its maritime environment."

The Port Washington Historical Society is supported through donations and memberships from individuals, foundations and corporations. By becoming a member you can help provide the support to ensure the continued success of the Resource Center and the 1860 Light Station and play a vital role in preserving the history of Port Washington.

ALL MEMBERS RECEIVE:

- Free admission to the 1860 Lighthouse Station and PWHS Resource Center
- Free admission to special events and speaker series
- Free guest passes for friends and family
- The *Historical Perspectives* newsletter
- Free admission to the Research Center at the Luxembourg American Center in Belgium, Wisconsin

YOU CAN ALSO JOIN ONLINE AT: PWHISTORY.ORG

MEMBERSHIP APPLICATION

Choose your membership level

<input type="checkbox"/> Individual	\$ 40	Membership Level Amount \$ _____
<input type="checkbox"/> Family	\$ 75	Additional Gift Amount \$ _____
<input type="checkbox"/> Honor Donor	\$ 250	
<input type="checkbox"/> Patron Donor	\$ 500	Total Amount Enclosed \$ _____

☐ Yes, I want to be a volunteer. Please send me more information.

NAME _____

ADDRESS _____

CITY _____ STATE _____ ZIP _____

PHONE _____

EMAIL _____

AMOUNT ENCLOSED _____

☐ VISA ☐ MC ☐ AMEX ☐ DISC ☐ CVV _____

CARD NO. _____ EXP _____

SIGNATURE _____

MAKE CHECKS OUT TO : THE PORT WASHINGTON HISTORICAL SOCIETY

Port Washington Historical Society
P.O. Box 491 Port Washington, WI 53074

IN MEMORIAM

Ronald J. Schowalter

Heartfelt condolences to so many in our community on the passing away of Ron "RJ" Schowalter. Ron has been a longtime friend to the Port Washington Historical Society. We are so very grateful for [his](#), his family's, and Port Washington State Bank's generous and unwavering support over the decades. The Schowalter family and PWSB contributions to our community and the surrounding area cannot be overstated and are greatly valued by so many community service organizations.

Thank you from us to you.

SEASONAL HOURS

Resource Center

205 North Franklin Street

Monday and Thursday

1:00 p.m. — 4:00 p.m.

Phone: 262-268-9150

1860 Light Station

311 Johnson Street

Closed for the season

Email for special appointments:

porthistinfo@gmail.com



*The Port Washington
Historical Society
preserves and shares
community history
that connects the
past to the present,
with a view to the future.*

NEW MEMBERS AND RENEWALS

Kleen Test Products
Richard & Sylvia Ansay
Thomas Antoine
Robert Barr
Nancy Bodenstein
Sue Boland
Renee Boos
John Bonness
Allon Bostwick
Ken & Lucy Buchholz
Don Cosentine
Ellen Coutts
Mike & Jodi Dickmann
Mike & Alison Didier
John E. Duffy

Carl Eisenberg
Jeff Ewig
James & Mary Jo Fuhry
Jennifer Garven
Don & Barb Gilmore
Kevin Grady
James & Jennie Greisch
Ken Grigas
William Hansen
Keith Janus
Carol & Jim Jarosz
Carol Jushka
Kathleen Kernan
Lori Mulloy
Devon Polzar

Carol Pomeday
Ted Poull
Shirley Roller Lee
Mary Fran Lepeska
& Patrick Tearney
Jan Leone
Maiya Lueptow
Barbara Metz
Vince Morano
Devon Polzar
Jack Rooney
Susan Van Vleet
Lawrence and Diana Verheyen
Mary Volmer
Mary Zirbes

DONATIONS & MEMORIALS

SOCIETY DONATIONS

Kitchie Allen
Robert Barr
Susan Boland
Mike & Alison Didier
Carol Ann Jushka
Lawrence & Diana Verheyen

ANNUAL FUND

Walter & Judy Dauska
Sam DeMerit
Erik & Carol Moeser
Nicole Sova & Dave Garacci
Paul L. Trump

MEMORIALS

In Memory of Marilyn Nelson
Christine & Terry Conway
Jon & Lisa Jansen
Paul & Victoria Klopp
Sandra Miszewski
Jeff & Barbara Smith
In Memory of Ronald J. Schowalter
Lisa Allen
Michael & Barbara Beattie
George & Mary Jo Bichler
Paul Drews
Marc & Grace Eernisse
Mary Flierl
Todd & Kathy Gordon
Kevin & Nancy Grady

Warren & Phyllis Grady
Gary & Debra Haseley
Gary & G.L. Kelly
David Kleckner
Michael & Amy Molepske
Eric & Jackie Oleson
Carl, Kathy & Billy Schowalter
Ronald J. Schowalter Memorial
Mary Kay Schuknecht
David & Karen Stigen

ARTIFACTS, ARCHIVES, PHOTOGRAPHS

James Bartelt
Robert Bergschultz
Allan & Marie Blunt
Linda Chaloupka
Ellen Coutts
Jane Frederick
Ken Grigas
Shelly Hartmann
Gary & Debbie Haseley
Jean Jeske
Ozaukee County Historical Society
PW Niederkorn Library
Thomas Spaeth
Jo Ann Stade
Donna Stepaniak
Donna Ubbink
Bob & Holly Wilke

THANK YOU, VOLUNTEERS

The Society could not exist without volunteers. We are blessed to have a large number that ranges in age from 12 to 85. They take on tasks that involve doing the business of the Society, working with the collections, keeping the 1860 Light Station open for visitors, working in the lighthouse garden, serving on the Board of Directors, greeting visitors to the Resource Center, helping to maintain our two buildings, responding to inquiries, and a whole lot more in between. We thank most heartily these dedicated friends who do the most important and the most mundane of tasks.

And.... we invite you to join us. Talk to one of us or call to ask what you can do. Call us at 262-268-9150.



THANK YOU, DIRECTORS - OLD AND NEW

Many thanks to our board members who have completed their terms on the PWHS Board of Directors. At the Port Washington Historical Society, members of the Board of Directors are elected to three-year terms and can serve two consecutive terms. This year we have three board members who have served six years and termed off the board. We also have one board member who is leaving after serving three years on the board.

Nancy Holley has served six years with the last three years as President. She will continue on the board for one more year in an *ex officio* role as Past President. George "Lefty" Bichler has served six years with the last four years as Treasurer. Andrea Cole has served six years, with the last three years as the 1860 Light Station Volunteer Coordinator. Keith Janus has served three years and has been the Chair of the Grounds and Maintenance Committee for all three years. All four directors also served as Volunteer Guides at the 1860 Light Station. We send out a huge thank you to these board members for their dedicated years of service to the Historical Society.

We also have two fantastic people who have volunteered to serve on the Historical Society board.

Mary Ackerman is a Wisconsin native and a resident of Port Washington for the past three years. She and her husband, Don Monnot, chose Port Washington as their retirement home and enjoy



participating in many community activities. They are avid gardeners at the local community garden and volunteer at several local organizations. Mary is an artist, and her paintings and wearable art are showcased at *The Mercantile Plaza* in Port.

Welcome Mary! We are thrilled that you have a passion for history and are joining the board of directors.

Following a life of service spanning three decades with a major metropolitan fire department in the Greater Chicagoland area, Don McCown and his wife, Lynette, found their happiness by relocating to Southeast Wisconsin and the wonderful community of Port Washington.

His retirement hasn't slowed his desire to continue giving back, whether it be serving as an adjunct instructor for the *United States Fire Administration's* fire and arson investigation program or to continue as a member of the Historical Society's Building and Grounds Committee as the newly appointed Chair.

Thank you for your willingness to serve a second term.

We are always interested in talking with community members who may want to serve on our board. If you or someone you know is interested in serving on our Board of Directors, please contact our Executive Director, Dawn St. George.



HOLIDAYS IN THE HARBOR OPEN HOUSE

The PWHS Resource Center at 205 N. Franklin will be open and decorated for a *Historic Holiday* on Saturday, December 14, 2024, from 11:00 a.m. to 3:00 p.m. as part of Port Tourism's *Holidays in the Harbor*. We'll be serving cookies and hot cider, and you may have a first look at our two new exhibits.

The *Shipwreck Sanctuary* exhibit has three new interactive tables and loads of information on not only shipwrecks, but the movement of people and commerce on the Great Lakes Water Highway during the late 1800s and early 1900s.

And... we know you'll want to visit our second new exhibit to learn more about the famous Blues singers and *Paramount Records*. Please drop in and join us for some holiday cheer!

ANSWERS TO THE PAINT ON PORT MURAL PROGRAM

1-C, 2-F, 3-H, 4-B, 5-I, 6-G, 7-D, 8-E, 9-A



Port Washington Historical Society

P. O. Box 491
Port Washington, WI 53074-0491
www.pwhistory.org

Save the Date

2nd Annual Spring Fling
Tuesday, May 6, 2025
(New Date!)

December 14 (Saturday) *Research Center Open House and opening of new exhibits at 205 N. Franklin Street at 11 a.m - 3 p.m.*

March 11, 2025 (Tuesday) Dr. Titus Seilheimer, Fisheries Specialist with Wisconsin Sea Grant - *They Swam with Dinosaurs: Sturgeons in the Great Lakes **

April 10, 2025 (Thursday) Marie Blunt - *What Counts as a Lighthouse? **

May 20, 2025 (Tuesday) Dr. Carol Cornelius - *A History in Indigenous Voices – Menominee, Ho-Chunk, Oneida, Stockbridge, and Brothertown Interactions in the Removal Era **
Sponsored by Louise Mollinger and David Franks

* 7:00 p.m. at the PWSB Community Room,
218 E. Washington Street, Port Washington

**For details and updates,
click here to visit:**

[www.facebook.com/
PortWashingtonHistoricalSociety](https://www.facebook.com/PortWashingtonHistoricalSociety)

and

[www.facebook.com/
1860LightStationMuseumPortWashingtonWI](https://www.facebook.com/1860LightStationMuseumPortWashingtonWI)

and

www.pwhistory.org/events

Click