



Historical Perspectives

Discovering Our History

1860 Light Station and Resource Center



VOLUME 35, ISSUE 1

SPRING 2024

PWHS SPRING FLING

The *Spring Fling* fundraiser on May 8 will be here before you know it. Invitations have been mailed. If you did not receive an invitation, please contact the Resource Center (262-268-9150) and we will gladly mail one to you. Please RSVP by April 24. You may also purchase tickets from our website under Events.

We've made room for a big crowd this year at the beautiful Newport Shores Event Space overlooking the harbor and Lake Michigan. We'll have exciting silent and live auction items and delicious food prepared by From Scratch in Cedarburg. We look forward to you joining us!

Follow us on
Facebook
and
Instagram!



- @PortWashingtonHistoricalSociety
- @1860LightStationMuseumPortWashingtonWI
- @porthistory

YOU'RE INVITED



Spring Fling

2024 ANNUAL FUNDRAISER

WEDNESDAY, MAY 8, 2024

NEWPORT SHORES • 324 NORTH LAKE ST

5:30PM-8:30PM

Complimentary Hors d'oeuvres
and Beverages

\$75 Per Person

Silent/Live Auction/Paddle Raise



Inside this issue:

<u>President's Message</u>	2
<u>Executive Director's Update</u>	3
<u>Resource Center News</u>	3
<u>1860 Light Station Report</u>	4
<u>Congratulations Dane!</u>	4
<u>Volunteers Needed</u>	4
<u>Resource Center Detectives</u>	5
<u>Cemetery Walking Tour</u>	5
<u>Give Back Day for PWHS</u>	6
<u>Seasonal Hours</u>	7
<u>New Members and Renewals</u>	7
<u>PWHS 2024 Speaker Series</u>	8
<u>Speaker Announcement for OCHS</u>	9
<u>Donations and Memorials</u>	10
<u>Save the Date Calendar</u>	12

President's Message

PWHS Well-Positioned for the Future

In mid-February, the Port Washington Historical Society hosted a meeting at the Resource Center of ten local historical societies. Reflecting on this meeting, I was reminded of how well-positioned our Society is to continue its valuable work in our community into the foreseeable future. Our physical assets and their strategic location in our community are invaluable. The Resource Center is an 1852 structure in the heart of Port's Franklin Street Historical District. Some historical societies have no physical location, or they are far off any main street.

The 1860 Historical Light Station is in one of the most picturesque areas in the City of Port Washington. Our historical district location and our nonprofit status are well established. All our landholdings are without debt, including our Johnson Street lot and Fredonia storage unit.

While PWHS does not receive municipal funding, the City of Port Washington has supported Society programs such as the historical district and marker initiatives. We received a state grant to build our lifeboat shelter. We have also partnered with the National Oceanic and Atmospheric Administration (NOAA) for funding to renovate the generator building at the Light Station and develop displays for the Wisconsin Shipwreck Coast National Marine Sanctuary.

We have an Executive Director to help develop programs, curate exhibits, network with the community and oversee operations. This frees our volunteers to maintain our archives, expand our collections and lead our tours.

Finally, our Board of Directors has worked hard to develop and update policies and procedures and to manage funds to guide and support our Society into the future. Anyone becoming a member or leader of the PWHS today can do so with confidence that it will be an active part of our community for many years to come.

Nancy Holley, President

Port Washington Historical Society Board of Directors



Board of Directors

Nancy Holley, President
George Bichler, Treasurer
Barbara Joosse, Secretary
Andrea Cole
Majka Drewitz
Kevin Grady
Keith Janus
Mike Keller
Donald McCown
Grant O. Smith

PWHS Exec. Director

Dawn St. George, PhD

Resource Center

Co-Managers

Jackie Oleson
Geri Zehren

1860 Light Station

Volunteer Coordinator

Andrea Cole

Newsletter

Majka Drewitz
Michele Weiland

Membership

\$40 Individual
\$75 Household

Philanthropic Levels

\$250 Honor
\$500 Patron

Contact information

205 N. Franklin Street
Port Washington, WI 53074
262-268-9150

www.pwhistory.org

Click

Historical Perspectives

is published 3 times per year

BEER GARDEN

On Saturday, July 27, PWHS volunteers will be tapping kegs and serving beer at the Upper Lake Park Beer Garden. We are grateful to the Friends of Port Washington Parks and Rec for the opportunity to fundraise for our mission. This year the Friends group is asking participating nonprofits (us) to always have five volunteers on site between 12:00 p.m. and 9:00 p.m., which includes setup and take down time. The Beer Garden is open 1:00 p.m. - 8:00 p.m. If you'd like to join our Board of Directors in raising funds for the Historical Society, we could really use your help. Please call Geri @262-268-9150 and leave a message. We'll get back to you asap.



EXECUTIVE DIRECTOR'S UPDATE

NEWS BREAK The 1860 Light Station will be open five days a week, Wednesday through Sunday, this summer! Our first Resident Lightkeepers arrive for the Memorial Day weekend opening. But we will still have a need for PWHs volunteers to join the Resident Keepers on Saturdays and Sundays. If you'd like to volunteer short-term during June, July or August (one weekend a month), please contact Andrea Cole at 1860lighthouse-tours@gmail.com about training. Also, thank you to the many friends who donated furnishings for the apartment for the Resident Keepers. They will now find it a delightful home away from home.

The Commercial Fishing Industry Memorial signs will be installed around May 1. We are thrilled that there will be readable signs again in Rotary Park. Thanks to everyone who donated to make the new signs possible!

The interactive Lake Michigan Table is being updated with new information on the Wisconsin Shipwreck Coast National Marine Sanctuary (WSCNMS). We expect the exhibit to be completed sometime this summer.

Speaking of the sanctuary, I am a member of the

WSCNMS Advisory Council and am headed to Alpena, Michigan, in May with other Council members for a tour of the Great Lakes Heritage Maritime Center and the Thunder Bay National Marine Sanctuary on Lake Huron. I'm looking forward to gaining a sense of what another Sanctuary is providing for visitors as we continue to plan for educational information on our new Sanctuary at the Light Station and the Resource Center.

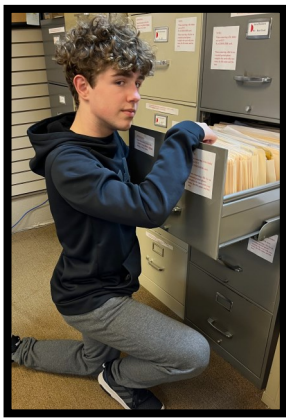
Since Spring is in the air, it is time to get outside and walk the Shipwreck Audio Storytelling Trail along the harbor to Coal Dock Park. You can start the tour from any of the stopping points along the tour, but a great place to start is the Niagara display to the east of Heart of the Harbor. Look for the QR code on the exhibit to start your tour.

We'll be back with another newsletter on August 1. Until then, enjoy your spring and summer, and we hope to see you soon at the Light Station and Resource Center.

Dawn St. George, PhD
Executive Director

RESOURCE CENTER NEWS

The Resource Center welcomed our newest and youngest volunteer, Gavin Cain. Gavin is an 8th grader at Thomas Jefferson Middle School and a member of the Junior National Honor Society and Beta Club which require service hours. Beta Club members retain core values of leadership, service, character, and achievement



in high school and beyond. We can certainly see all those qualities in Gavin. He is delightful to work

with and is continuing to volunteer even though his service hours have been completed. Go Gavin!

Perhaps it was the few warm spring days that prompted folks to clean out their attics, but we certainly benefited from the items that were donated. Included were items from the Blake family that had been in storage since they were removed from the Julia Blake Muenster house at 1004 W. Grand Ave years ago. Barnum Blake was the builder of our 205

N. Franklin Resource Center and a key figure in the history of Port Washington in the 1800s.

The donated items included his son Edward's 1865 Civil War discharge certificate, business card and framed military photographs. Edward Blake was a local businessman and city leader in Port Washington. He is remembered for his Civil War service when, despite his father's efforts to monetarily sway him from serving, he carried the U.S. flag through numerous battles. The flag is now part of the Wisconsin Veterans Museum in Madison. Similarly, the genealogy of the Blake family has been offered to the society by family member Beth McQuade who has been working on the project for a number of years. The greater



The greater

(Continued on page 9)

1860 LIGHT STATION REPORT

We have exciting plans for the spring at the 1860 Light Station! We have launched our Resident Keeper program! This program has already been a success, with each week between Memorial Day and Labor Day being reserved by Resident Keepers.

These folks are coming from inside and outside of Wisconsin and are excited to share Port Washington’s maritime history with the public. Resident Keepers will stay for one or more weeks at the 1860 Light Station and will conduct tours during their stay.

Tours to the public will be available 11:30 a.m. – 3:30 p.m. Wednesdays through Sundays.

Volunteer tour guides are still needed to provide continuity and to fill the volunteer roster during weekends. Please contact Andrea at 1860lighthouse-tours@gmail.com if you’re interested in joining our team. We offer a flexible schedule, training, and we guarantee a good time!



View of the 1860 Light Station from downtown Port on a sunny winter day — Photo by Pat Curtis

CONGRATULATIONS DANE!

Our high-school volunteer, Dane Metzger, came back from the 2024 State Career and Development Conference with a trophy – First Place for the DECA Hospitality Tourism Operations Research Project (HTOR), aimed at students collaborating with a local business in the field of hospitality and tourism. For his project, Dane chose to work with our Historical Society because we

represent a community-centric organization with a volunteer base that is always more than willing to help any community member. Dane worked with Society staff to gather and analyze data, resulting in a number of recommendations for future budgeting and planning.



DECA is a Co-Curricular business organization that “prepares emerging leaders in the fields of Marketing, Finance, Hospitality, and Business Management.” Students compete at the district, state, national and international level. Dane is now heading to the International Career and Development Conference (ICDC) in Anaheim, California, in April. Best of luck, Dane!

VOLUNTEERS NEEDED

Please consider a gift of your time and talents through volunteer opportunities at PWHs! Whether leading a tour, doing office work, pounding a nail, serving on a committee, or helping with maintenance, volunteers are a valuable part of the Museum team.

In 2023, PWHs volunteers gave nearly 5000 hours of their time to support our mission to preserve and celebrate Port Washington history. We rely on volunteers to fill crucial roles.

For more information on volunteering at the Museum, please contact our Geri Zehren by phone (262-268-9150), email (porthistinfo@gmail.com), or stop by the Resource Center to express your willingness and interests! Thank you for your consideration!

“WITHOUT VOLUNTEERS, WE’D BE A NATION WITHOUT A SOUL.” — ROSALYNN CARTER

RESOURCE CENTER DETECTIVES

Each Monday and Thursday we start with a work plan subject to interruptions by visitors, phone and e-mail.

When the doorbell rings it may announce a visitor to Port Washington with perhaps only the knowledge that his or her great grandparents lived in Port. Sometimes the visitors are prepared with dates of birth, death, and marriage, addresses, occupations, religious affiliation, military records and more. That information is most helpful for providing archival documents. On the other hand, some just provide one piece of information that may or may not allow us to find the details of the mystery of their search.

We sometimes feel like Sherlock Holmes, Poirot, Sir Arthur Conan Doyle, Miss Marple, or Agatha Christie in our quest for answers to inquiries.

Some recent requests included:

- Information about *The Flying Dutchman* Motorcycle Races that took place in Port between 1911 and 1913. It was accompanied by a photo taken in front of the Boerner Building on Franklin Street. Unfortunately, we had no information about the race in Port Washington and Wikipedia only showed records going back to the 1960s.
- A visitor brought in an ash tray from The Country Inn Store in Knellsville. The store was established in 1852 by William Knells. It was torn down in 1972. Knellsville is located north of I-43, north of Port Washington.
- Draft Riots of Port Washington. We have many articles covering that incident.
- Information about the city in 1898.
- Information about WGLB radio station that was located on the northeast corner of Northwoods

Drive and Green Bay Avenue (Highway 33) during 1970-1980. It was founded by Joel Kinlow in 1963, a minister. It is now located in Milwaukee and run by Kinlow's children.

- Many requests about houses with addresses. We can find information from directories and other sources that provide dates of construction and style.
- Inquiries about Wilson House. The Wilson House was built in 1891 in the Queen Anne style. It is built of cream brick with a corner turret and finial. It was initially owned by Frank Baines, an uncle of William Stewart Wilson. The present owners are (Port Washington State Bank) R. J. Schowalter, Frank M. Metz, and Ehrlich, Genson Assoc. In the early 1990s the building housed George's Wilson House restaurant. Since then, the PWSB has used the rooms for meetings. The Lakewiew Room was used as a community room for various organizations. Presently all the space is used for office space for the bank.
- Inquiries about Columbia Park. Columbia Park is located at the northeast corner of Milwaukee Street and Dodge Street. In years past it was a destination for visitors who traveled from Milwaukee by steamboat to spend the afternoon in Port Washington.

If a request involves genealogical information that we do not have we refer our inquiries to the Luxembourg American Cultural Society, Ozaukee County Historical Society or others who may have the pertinent information.

Mary Flierl
Volunteer

CEMETERY WALKING TOUR

On Saturday, May 25, there will be a walking tour through Old St. Mary's Cemetery from 10:00 a.m. until 12:00 p.m.

The cemetery was established on February 5, 1854. It is located at the West end of Dodge Street and borders along Webster Street. The address is 550 N. Webster Street. Randy Ray, local genealogist, will tell stories about those buried there.

GIVE BACK DAY FOR PWHS

☀️ Join us at The Purple Turtle Artisan Collective for our Give Back Day! ☀️

On Saturday, April 20th, The Purple Turtle is spreading joy and giving back to the community! For every purchase made, 10% of all sales will be donated to support the Port Washington Historical Society.

It's your chance to shop guilt-free and make a difference in preserving our local history. Mark your calendars and shop with purpose on April 20th! Together, let's make a meaningful impact.

See you there!



Give Back Day for Port Washington Historical Society!
10% of all Sales donated back to the Historical Society.

WWW.THEPURPLETURTLEARTS.COM

JOIN
The Port Washington Historical Society

Franklin Street looking North, Port Washington, Wis.

Preserving the past for future generations

"Our mission is to create opportunities for inspirational discovery through preservation, education and exploration of the Port Washington area's history and its maritime environment."

The Port Washington Historical Society is supported through donations and memberships from individuals, foundations and corporations. By becoming a member you can help provide the support to ensure the continued success of the Resource Center and the 1860 Light Station and play a vital role in preserving the history of Port Washington.

ALL MEMBERS RECEIVE:

- Free admission to the 1860 Lighthouse Station and PWHS Resource Center
- Free admission to special events and speaker series
- Free guest passes for friends and family
- The *Historical Perspectives* newsletter
- Free admission to the Research Center at the Luxembourgh American Center in Belgium, Wisconsin

YOU CAN ALSO JOIN ONLINE AT: PWHISTORY.ORG

MEMBERSHIP APPLICATION

Choose your membership level

<input type="checkbox"/> Individual	\$ 40	Membership Level Amount \$ _____
<input type="checkbox"/> Family	\$ 75	Additional Gift Amount \$ _____
<input type="checkbox"/> Honor Donor	\$ 250	Total Amount Enclosed \$ _____
<input type="checkbox"/> Patron Donor	\$ 500	

Yes, I want to be a volunteer. Please send me more information.

NAME _____

ADDRESS _____

CITY _____ STATE _____ ZIP _____

PHONE _____

EMAIL _____

AMOUNT ENCLOSED _____

VISA MC AMEX DISC CVV _____

CARD NO. _____ EXP _____

SIGNATURE _____

MAKE CHECKS OUT TO : THE PORT WASHINGTON HISTORICAL SOCIETY

Port Washington Historical Society
P.O. Box 491 Port Washington, WI 53074



IN MEMORIAM

With great sadness we bid farewell to ...

Marion Macek Huirias

"What you leave behind is not what is engraved in stone monuments, but what is woven into the lives of others." (Pericles)



*The Port Washington
Historical Society
preserves and shares
community history
that connects the
past to the present,
with a view to the future.*

SEASONAL HOURS

Resource Center

205 North Franklin Street

Monday, Thursday and Friday

1:00 p.m. — 4:00 p.m.

Saturday

10:00 a.m. — 2:00 p.m.

May 31 through September 7

Phone: 262-268-9150

1860 Light Station

311 Johnson Street

NEW! Open 5 days per week!

Wednesday through Sunday

11:30 a.m. — 3:30 p.m.

May 25 through September 1

Don't miss our Resident Keepers this summer!

NEW MEMBERS & RENEWALS

Regina Bares

Sue Birnschein

Nancy Bodenstein

Kelly Brown

Ken & Lucy Buchholz

James and Mary Burmesch

Suanne Cavanaugh

Tom & Ruth Cloonan

Don A. Cosentine

Lynn Cosentine

Susan Didier

Mary Downing

Rick Ewig

Claire Flierl

David Franks & Louise

Mollinger

Donald & Barbara Gilmore

Wayne Gregory

Jennie Greisch

Andrew and Susan Gumm

Jerry & Diana Gutzman

David & Kay Kasun

Lou H. Kirschling

Kent Knudsen

Terrence Knudsen

Vincent Morano

Lori Mulloy

Terry & Mary Murphy

Mary Kay Schuknecht

Nicole Sova & David Garacci

Doug Smith

Brian Stevens

Barb Wardius

Julie Wirgau

PWHS 2024 SPEAKER SERIES

All speaker programs begin at 7:00 p.m. at the Port Washington State Bank Community Room at 218 E. Washington Street.

Tuesday, April 16

Kurt Sampson will present on his recently published book, *Indian Mounds of the Horicon Marsh and the Upper Rock River*. The book is co-authored by Bill Volkert.

Kurt is a professional archaeologist with over 30 years of experience in Wisconsin archaeological research. His work has focused on Native American burial mound site complexes and ceremonial sites, with specific concentration on the Effigy Mounds Burial Complex.

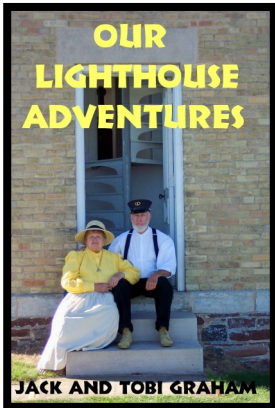
He is the Director and Curator of the museum at the Dodge County Historical Society in Beaver Dam, Wisconsin, for the past 17 years. He is also the past President of the Wisconsin Archeological Society and a member of the Wisconsin Archaeological Survey. Kurt administers the Effigy Mounds Initiative which works with private and public landowners to protect and preserve indigenous mound sites around the region.

Kurt grew up in nearby Cedarburg, Wisconsin, and developed an early love of archaeology and a fascination with Indian mounds while visiting Lizard Mound State Park near West Bend, Wisconsin.

Tuesday, June 11

Jack and Tobi Graham, Resident Keepers, will present *Lighthouse Adventures: A Travelog of Most of the Lights Where We Have been Volunteer Keepers*.

Jack Graham is a retired Pennsylvania state park manager, always involved in the operation and maintenance of historic sites, colonial-era farms, grist mills, iron furnaces, and farmstead buildings. Since retirement in 2005, Mr. Graham and his wife have spent a part of each summer as docents at 17 different lighthouses across the U.S. and Canada, ten of them on the Great Lakes. He writes articles on lighthouse history, operation, and lore for both the *Lighthouse Digest* magazine and for the *Keeper's Log* magazine of the U.S. Lighthouse Society. Jack and Tobi will be in residence beginning Memorial Day weekend and stay for three weeks.



Thursday, July 18

Marie A. Blunt is the author of *Lighthouse Architecture*. She is an experienced lighthouse lecturer who

has personally visited over 450 lighthouses. She serves as a volunteer docent at the Michigan City Old Lighthouse Museum and authored the popular book *The*



Lighthouse Primer: An Introduction to Our Compelling Beacons.

Marie's writing style is engaging and informative. Vibrant full color photos taken by her photographer husband accompany

her lecture. Marie and her husband, Allan, will be Resident Lightkeepers at the 1860 Light Station the week of Marie's lecture.

Lighthouses were yesterday's vitally important navigational beacons. Today they may be seen as nostalgic reminders of a simpler time. Come explore what happens when towers fall, how the federal government often recycled lighthouse parts, and the surprising effects of erosion.

PREPARE TO BOARD!

Public Sightseeing Cruises Available



JULY 13-18 | 2-3:30PM AND 4-5:30PM

- Departs from Port Washington Harbor
- Tour Guide on board
- Cash Bar on board
- Enjoy beautiful lakeside views



VISIT EDELWEISSBOATS.COM TO BUY TICKETS TODAY!

Private Charters available, contact lindsay@edelweissboats.com for more information.

SPEAKER ANNOUNCEMENT FOR THE OZAUKEE COUNTY HISTORICAL SOCIETY

The story of Leland Stanford begins in Albany, New York, a feckless youth who dodged hard work every chance he got and moved to Port Washington, Wisconsin, in 1848. Having studied law in New York and passed the state bar of Wisconsin, he set up a small law practice on Franklin Street.

He got involved in the politics of the day and stayed a prominent figure in the city until a fire destroyed his office in 1852. He then started his journey west and became one of the most important figures in the building of the transcontinental railroad, which altered American life forever.

His life was met with intrigue, failures, success, love and loss. He eventually became one of the most powerful and wealthiest men in the nation. The death of his adolescent son prompted him to build Stanford University as a memorial. The school became the birthplace and incubator of the Silicon Valley.

Roland De Wolk holds a degree in history from the University of California, Berkeley. He spent many years as a print, online and broadcast journalist, co-founded the first university online journalism site in the nation as a Senior Lecturer at San Francisco State University's

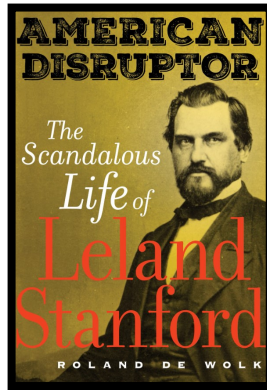
journalism department. That background kept him on track to research the life of Leland Stanford, one of the Central Pacific Railroads' *Big Four*.

Roland spent time at the Port Washington Historical Society and the Ozaukee County Historical Society as he gathered valuable material for his book on Leland Stanford, published in 2019.

The Ozaukee County Historical Society is honored to have Roland De Wolk, author of *American Disruptor: The Scandalous Life of Leland Stanford* as their speaker at the May 6 quarterly meeting to be held at the historic courthouse in Port Washington. There will be a brief reception to meet Roland De Wolk at

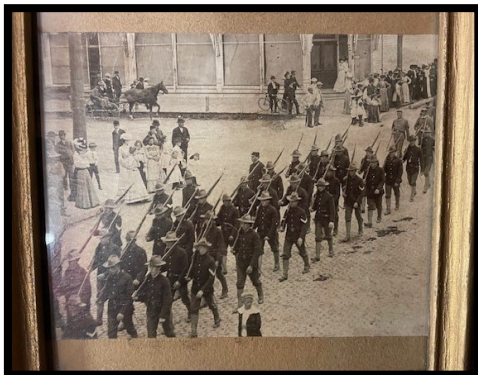
6:30 p.m., a few announcements by the Ozaukee County Historical Society at 7:00 p.m. and the fascinating presentation about Leland Stanford at 7:15 p.m. There will be beer tasting by the Fermentorium of Cedarburg and other refreshments and appetizers. The event is free and open to the public.

A sincere thank you to our sponsors: O'Neil, Cannon, Hollman, Dejong and Laing, SC., The Port Hotel, the Port Washington Historical Society, the Ozaukee County Historical Society and the Fermentorium.



(Continued from page 3)

Blake family tree encompasses both John Martin



Bostwick who was a part of the development of the Wisconsin Chair Factory in Port Washington and Judge Leopold Eghart whose home is a part of the history of Port Washington open to the

public in the summer months. The genealogy is a great addition to our Blake family files.

Recently a nephew of Ray Buivid has donated pictures and newspaper clippings from his famous uncle's football career at Port Washington High School and Marquette University, where he participated on the All-American team, and then professionally with the Chicago Bears in the 1930s.

With the closing of the Port Washington branch of

BMO Harris Bank, a large gift of paintings which hung in the bank was given to the Society. These paintings, originals and prints, are of Port Washington and were done by artists Shirley Schanen Gruen, Harold Hansen,



Bob Stewart and Kay Dawson. Some of the prints will be displayed in the 1860 Light Station apartment where visiting lightkeeper volunteers will help to guide tours at

(Continued on page 10)



DONATIONS & MEMORIALS



SOCIETY DONATIONS

Catherine & Alvin Bares
Catherine Brown
Kelly Brown
Donald Cosentine
Patrick Poole

ROTARY PARK FISHERMAN SIGNS

Roger Barsch
John Decker
Ewig Families
Mark Gibes
David & Sandra Jacobson
Robert Klein
Thomas & Jean Klein
Terrence Knudsen
Devon Polzar
Van Ells/Poole Families
PW Kiwanis Foundation
Mark & Cathy Schowalter
Smith Families
Lloyd Smith Memorial Service
Donations

ANNUAL APPEAL

Doug & Ardyce Ashmann
Regina Bares
Mary Becker
George & Mary Jo Bichler
Kathleen Bink
Tim Bink

Nancy Bodenstein
Jim & Mary Burmesch
Walter & Judith Dauska
Samuel DeMerit
Mike & Jodi Dickmann
Mike & Alison Didier
William & Phyllis Gahan
Vaughn & Carol Hallada
Scott & Susan Heatwole
Barbara Joesse
Jacqueline Jushka
Susan Killey
Ken & Pat Kozak
Richard Laske
Mark & Barbara Matera
Marilyn Nelson
Elaine Nulph
Eric & Jackie Oleson
James & Mary Jo Pauly
Virginia Pierson
Michael & Diane Pike
William & Jean Schanen
JoEllen Schlereth
Mark & Cathy Schowalter
Ronald & Elizabeth Schowalter
Steve & Wendy Schowalter
Dean & Norma Jean Shaver
Jo Ann Stade
Lawrence & Diana Verheyen
Michele Weiland & Lee Olsen

Gerl Zehren
Zing Boutique

MEMORIALS

In Memory of Marion Macek
Huiriias

Dean & Patricia Kleist
Robert & Paula Schreiner

In Memory of Mary Ann Paulin

ARTIFACTS, ARCHIVES, PHOTOGRAPHS

BMO Harris Bank

William Buivid

Barbara Joesse

Linda Kellar

Wayne & Kathy Keller

Mark Kuehn

Jan Leone

Debra Linden

Lori Mulloy

Pat Poole

Rick Rosal

Bill & Jean Schanen

Diana Verheyen

John Weinrich

Lucille & Jim Wester

Therese Wester

Winnebago Cty. Hist. &

Archaeological Soc.

Gary Wisner

Gerl Zehren

(Continued from page 9)

the lighthouse this summer.

Dave Kleckner donated his file on the history of Knellsville which he did as a high school project. He said it was an assignment for his history teacher, Jo Ann Stade, who was also his favorite teacher. Donations like this enrich our files on the history of the area.

Recently, one of the Society board members helped solve the mystery of a postcard that came to us in 2021, a postcard with a photograph of a group of police officers from an earlier time. It took a retired Port Washington police officer to discover that the photograph depicted Grafton marshals in 1915. The photograph has been passed on to the Grafton Police Department.

The Society is always looking for volunteers but now we have a special request. The cruise ship Edelweiss will be in Port Washington from July 13 to July 18. On those days we would like to have the Resource Center at 205 N. Franklin St. open to visitors who have come for a sailing experience and will be visiting the



city. Please contact us if you are interested in helping during those days.

*Jackie Oleson, Gerl Zehren
Resource Center Co-Managers*



THE PORT WASHINGTON HISTORICAL SOCIETY

Discovering Our History

The Port Washington Historical Society preserves and shares community history that connects the past to the present, with a view to the future.

1860 Light Station



Like lighthouses?

We have a beauty - our 1860 Light Station at 311 Johnson Street atop St. Mary's Hill. Many generous donors, including the Grand Duchy of Luxemburg, pitched in to restore this lighthouse to its former glory. The lighthouse is open Memorial Day to Labor Day, for docent-led tours. Climb to the top of the tower and you'll get the best view in town.

While you are at the Light Station:

Download the *VoiceMap* app and listen to the audio *Shipwreck Walking Tour* which leads you from the 1860 Light Station back down to the harbor and around the downtown parks.

Be a live-in docent at the 1860 Light Station

Your group of two to four adults spend a week or more in the second-floor apartment above the Light Station Museum overlooking Lake Michigan.

DUTIES: Greet visitors, help in the gift shop, and act as docents

LOCATION : 311 Johnson Street, Port Washington, WI 53074

VISIT: pwhistory.org for application and fees.

CONTACT: porthistinfo@gmail.com for additional information

The Resource Center and Exhibits



The headquarters of the Port Washington Historical Society is located at 205 North Franklin Street. If you'd like to research a family history, the background of an old building or shipwreck, this is the place to come. Delve into area history using the Ozaukee Press interactive table and explore the Lake Michigan Table, an interactive real-time display of Lake Michigan showing vessels on the Lake, current weather conditions and the history of various ports.

While visiting the Resource Center, pick up these maps of Port Washington Walking Tours

- Franklin Street Historic Buildings
- Seven Hills and Stairs Around Town
- Downtown Historic Markers



Follow us on:



Visit us at: pwhistory.org



Port Washington Historical Society

P. O. Box 491
 Port Washington, WI 53074-0491
www.pwhistory.org

Save the Date

Speaker Series: Kurt Sampson

Wisconsin's Indian Mounds
 Tuesday, April 16, 7:00 p.m.
 PWSB Community Room*

Saturday, April 20 – Shop at the The Purple Turtle: **10% of all sales donated to PWHS**

Monday, May 6** – Roland De Wolk: *American Disruptor, The Scandalous Life of Leland Stanford*

Wednesday, May 8 – *Spring Fling* Annual Fundraiser at Newport Shores

Saturday, May 25 - Old St. Mary's Cemetery Walking Tour

Tuesday, June 11* – Jack and Tobi Graham, Resident Keepers: *Lighthouse Adventures*

Thursday, July 18* – Marie and Allan Blunt, Resident Keepers: *Lighthouse Architecture*

Saturday, July 27 – PWHS hosts Upper Lake Park Beer Garden

*Speaker Series – at the PWSB Community Room, 218 E. Washington Street, Port Washington

**In partnership with the Ozaukee County Historical Society – at the Old Courthouse in downtown Port Washington

For details and updates,
 click here to visit:

[www.facebook.com/
 PortWashingtonHistoricalSociety](https://www.facebook.com/PortWashingtonHistoricalSociety)

and
[www.facebook.com/
 1860LightStationMuseumPortWashingtonWI](https://www.facebook.com/1860LightStationMuseumPortWashingtonWI)

and
www.pwhistory.org/events